

HL-20.

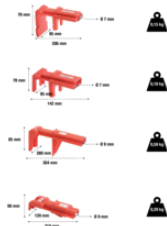
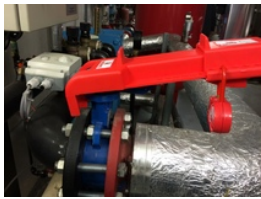
Adjustable quarter turn ball valve lockout, 206 x 78 x 95 mm

Application :

- For locking quarter-turn type valves.
- Completely locks the valve and thus prevents operation.

Characteristics :

- Adjustable condemner 1/4 turn valves, good resistance to cracking, operating temperature 90 °C maximum.
- Red polyurethane material.
- Adjustable from 38,10 à 63,5 mm
- Number of holes: 13
- "DANGER" marking.



Ref.	Description	Diameter	Characteristics
	Color	Hole	Weight
HL-201	■	7	0,230